

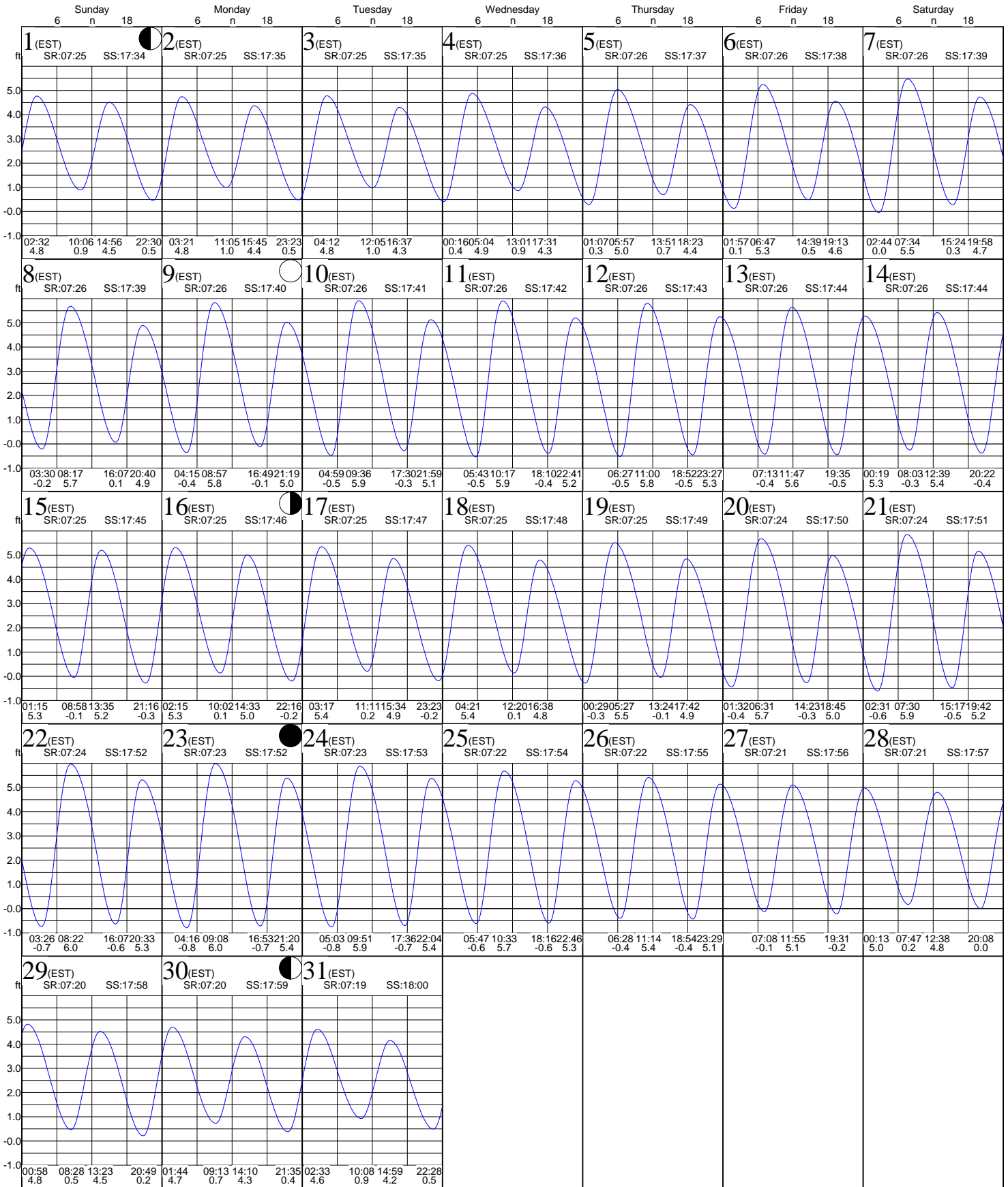
# Tides:Champney Island, South Altamaha River

based on Savannah River Ent., Georgia (NOAA)  
31° 20' N 81° 28' W

Average Tides  
Mean Range: 5.2 ft  
MHWS 6.1 ft  
Mean Tide: 2.8 ft

Monthly High & Low  
High January 23, 09:08 6.0 ft  
Low January 23, 04:16 -0.8 ft

## January 2012



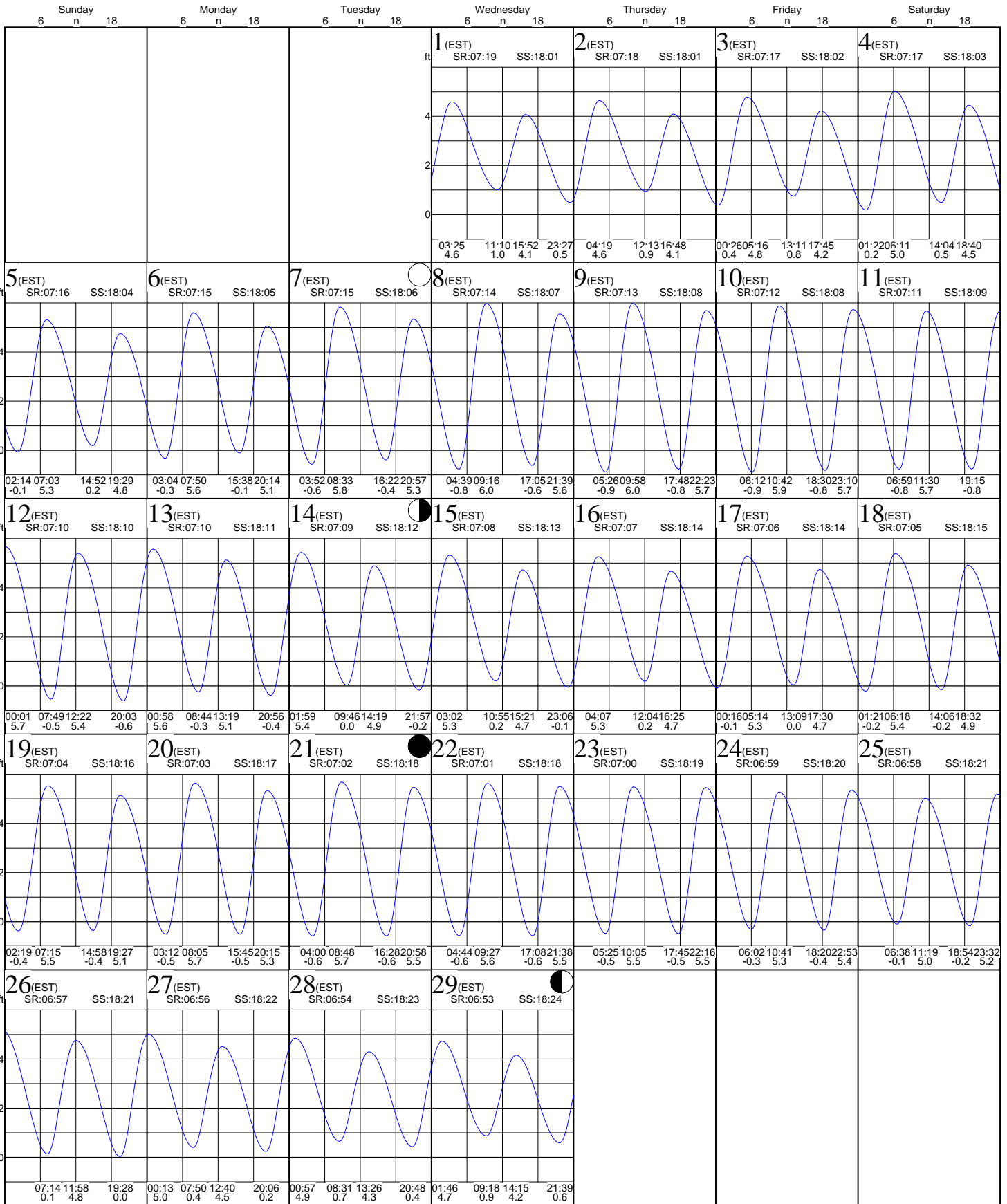
# Tides: Champney Island, South Altamaha River

based on Savannah River Ent., Georgia (NOAA)  
31° 20' N 81° 28' W

Average Tides  
Mean Range: 5.2 ft  
MHWS 6.1 ft  
Mean Tide: 2.8 ft

Monthly High & Low  
High February 9, 09:58 6.0 ft  
Low February 10, 06:12 -0.9 ft

## February 2012



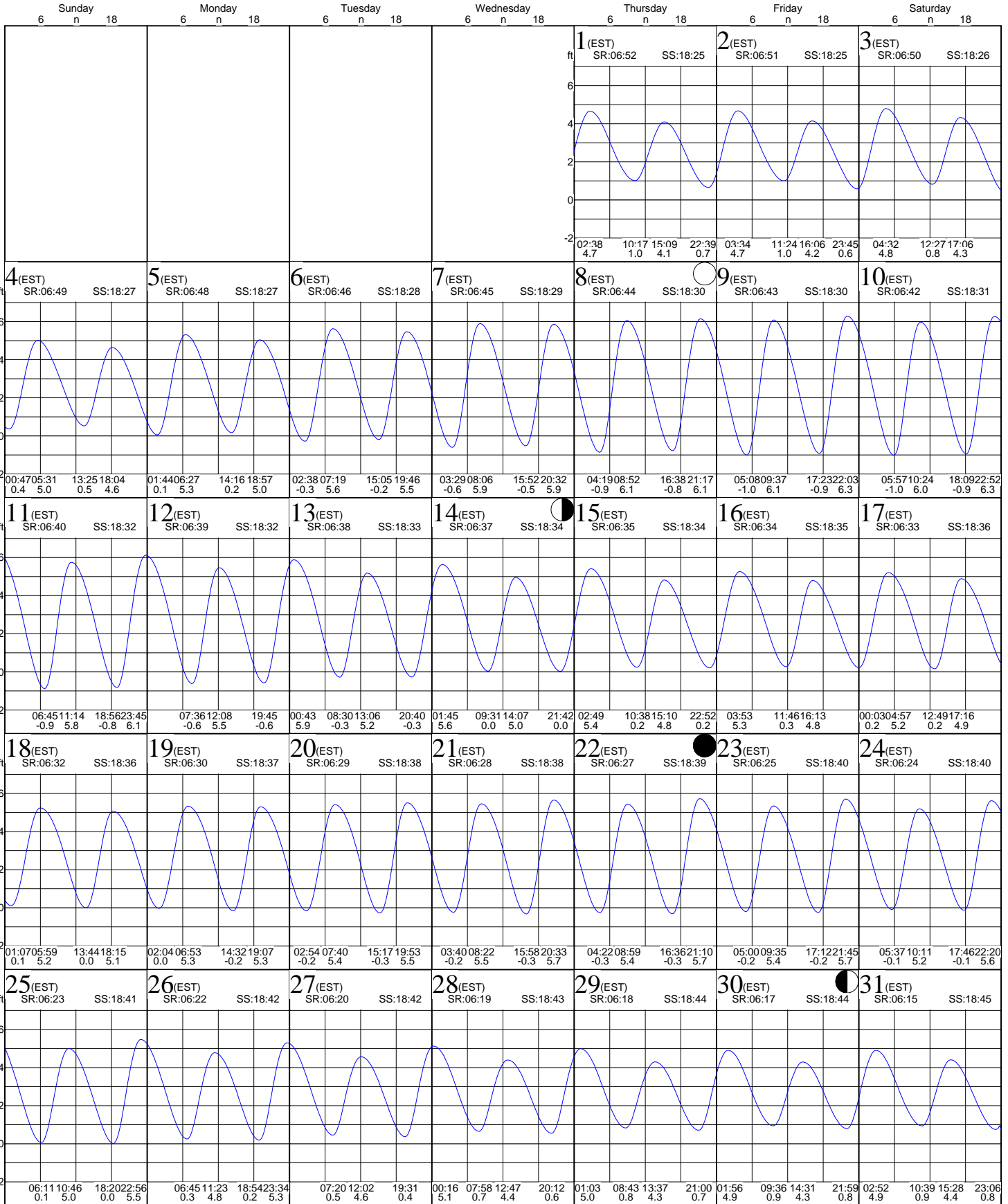
# Tides:Champney Island, South Altamaha River

based on Savannah River Ent., Georgia (NOAA)  
31° 20' N 81° 28' W

Average Tides  
Mean Range: 5.2 ft  
MHWS 6.1 ft  
Mean Tide: 2.8 ft

Monthly High & Low  
High March 9, 22:03 6.3 ft  
Low March 10, 05:57 -1.0 ft

## March 2012



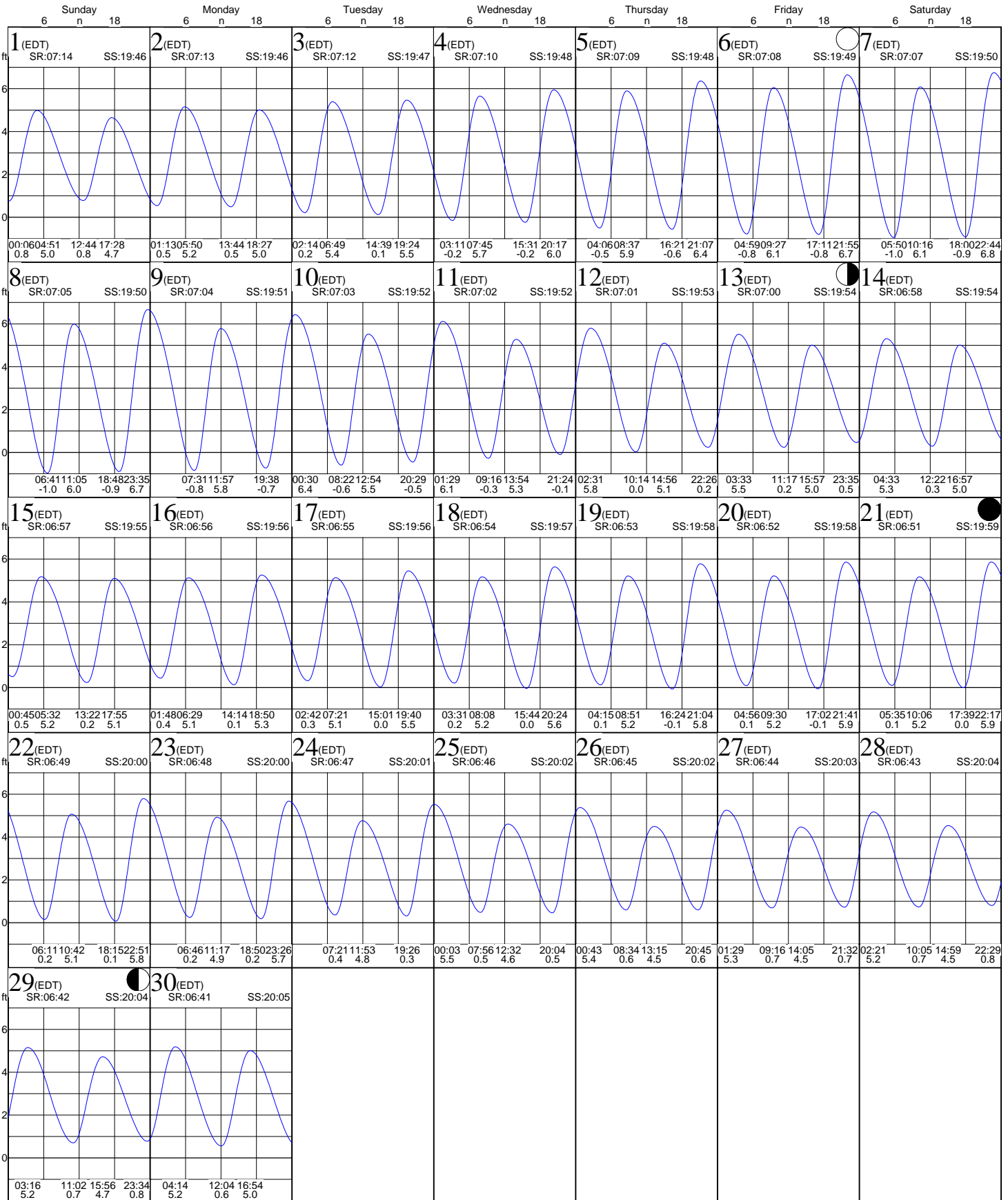
# Tides: Champney Island, South Altamaha River

based on Savannah River Ent., Georgia (NOAA)  
31° 20' N 81° 28' W

Average Tides  
Mean Range: 5.2 ft  
MHWS 6.1 ft  
Mean Tide: 2.8 ft

Monthly High & Low  
High April 7, 22:44 6.8 ft  
Low April 8, 06:41 -1.0 ft

## April 2012



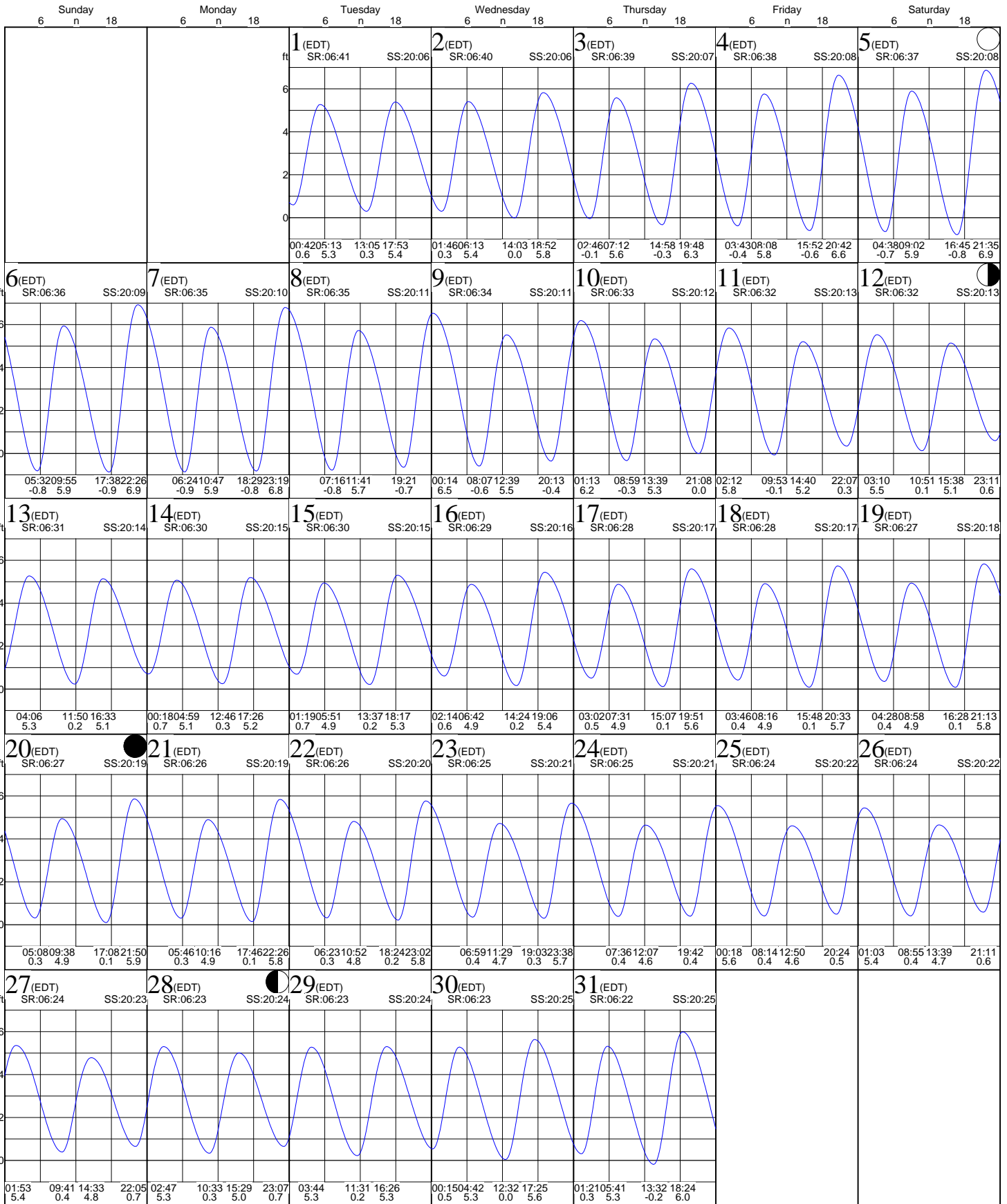
# Tides:Champney Island, South Altamaha River

based on Savannah River Ent., Georgia (NOAA)  
31° 20' N 81° 28' W

Average Tides  
Mean Range: 5.2 ft  
MHWS 6.1 ft  
Mean Tide: 2.8 ft

Monthly High & Low  
High May 6, 22:26 6.9 ft  
Low May 6, 17:38 -0.9 ft

## May 2012



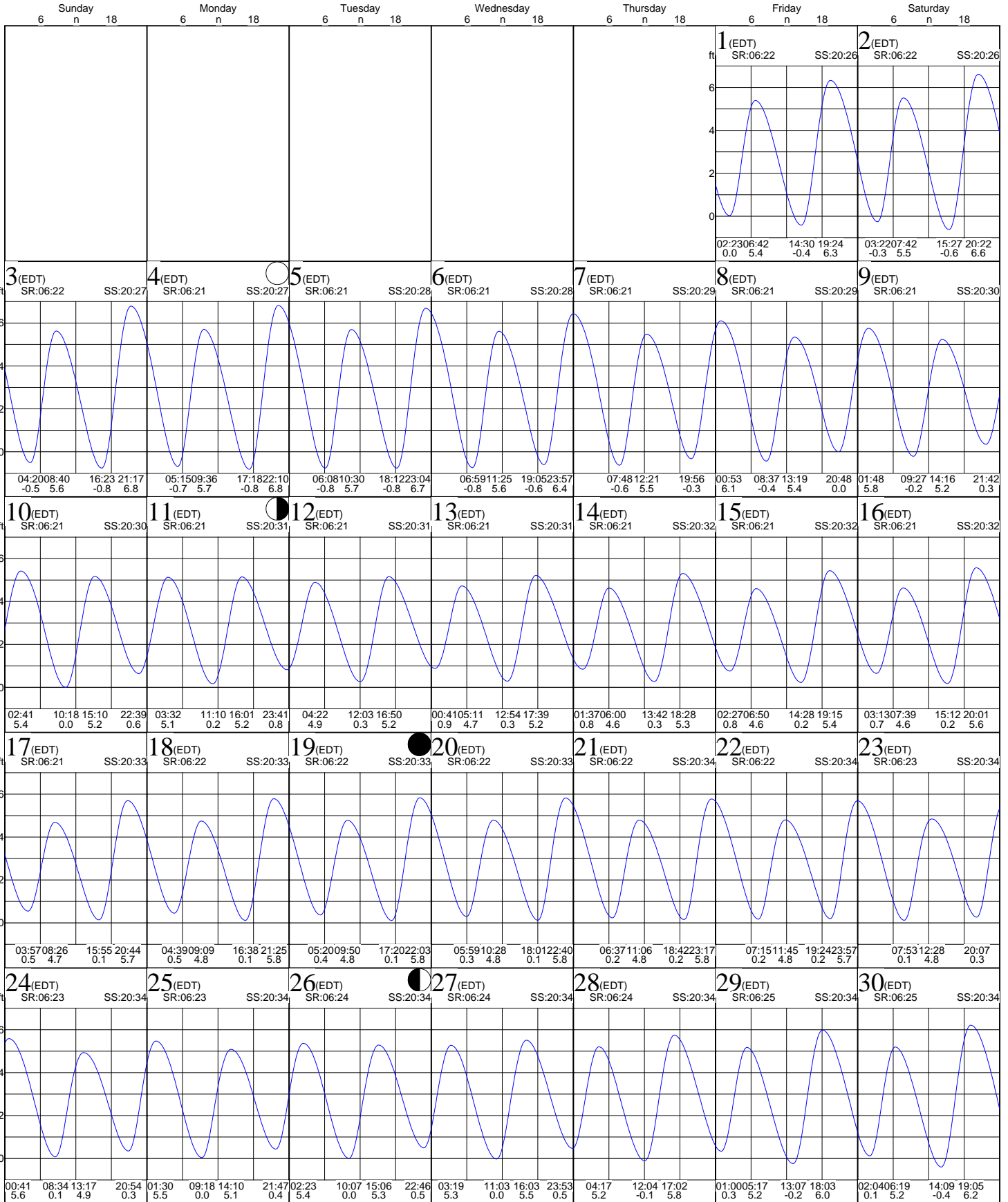
# Tides:Champney Island, South Altamaha River

based on Savannah River Ent., Georgia (NOAA)  
31° 20' N 81° 28' W

Average Tides  
Mean Range: 5.2 ft  
MHWS 6.1 ft  
Mean Tide: 2.8 ft

Monthly High & Low  
High June 4, 22:10 6.8 ft  
Low June 4, 17:18 -0.8 ft

## June 2012



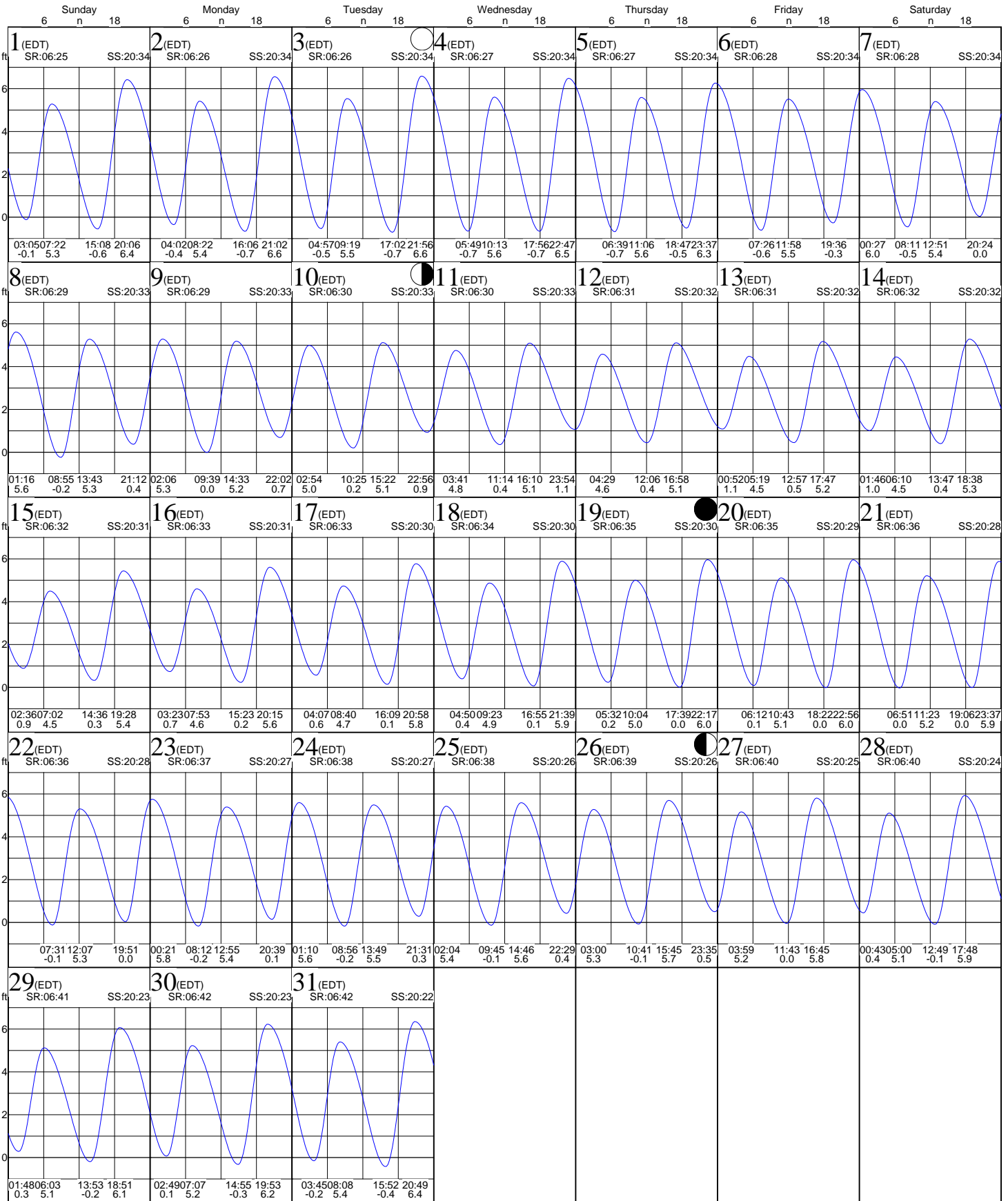
# Tides: Champney Island, South Altamaha River

based on Savannah River Ent., Georgia (NOAA)  
31° 20' N 81° 28' W

Average Tides  
Mean Range: 5.2 ft  
MHWS 6.1 ft  
Mean Tide: 2.8 ft

Monthly High & Low  
High July 3, 21:56 6.6 ft  
Low July 3, 17:02 -0.7 ft

## July 2012



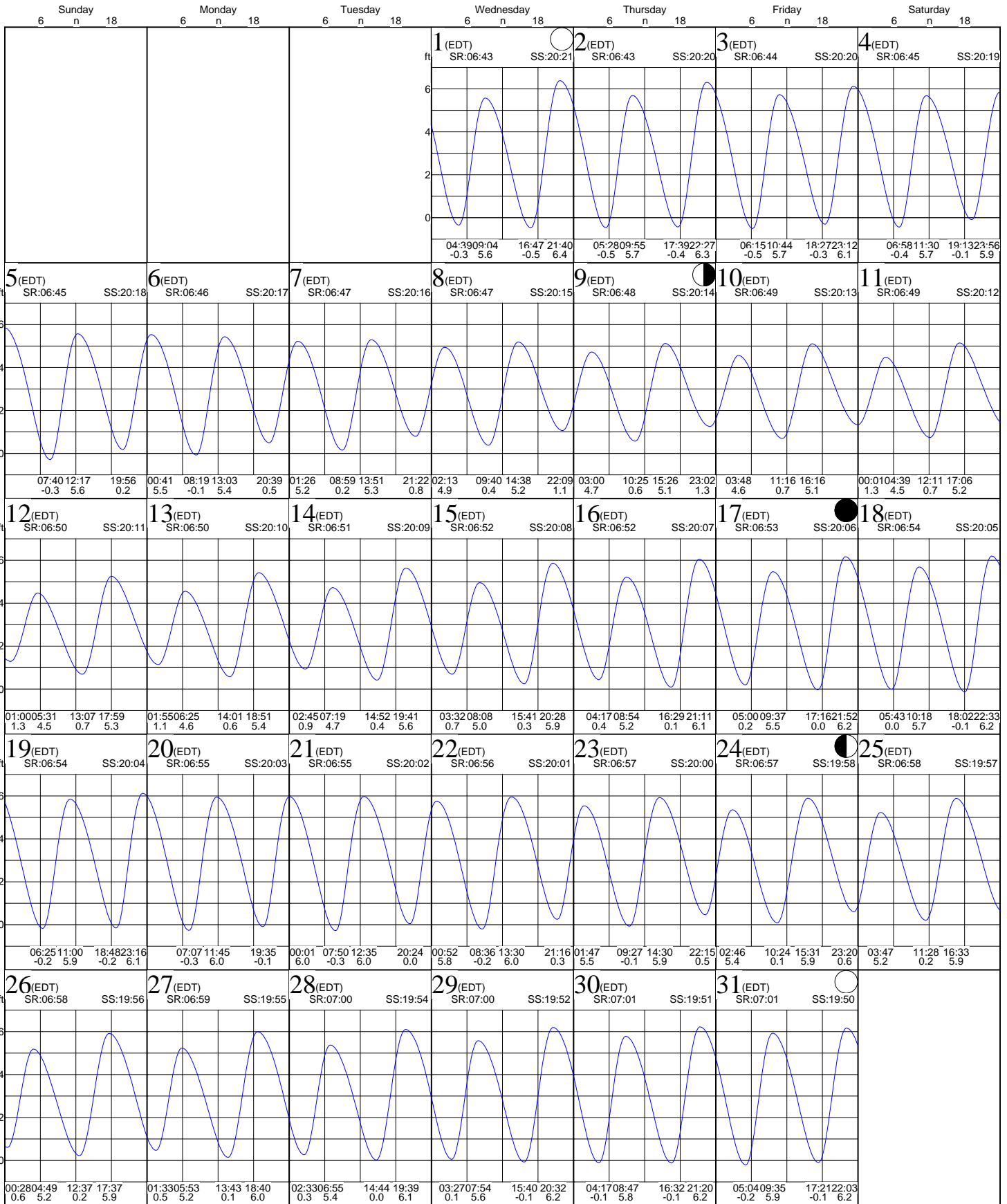
# Tides:Champney Island, South Altamaha River

based on Savannah River Ent., Georgia (NOAA)  
31° 20' N 81° 28' W

Average Tides  
Mean Range: 5.2 ft  
MHWS 6.1 ft  
Mean Tide: 2.8 ft

Monthly High & Low  
High August 1, 21:40 6.4 ft  
Low August 3, 06:15 -0.5 ft

## August 2012



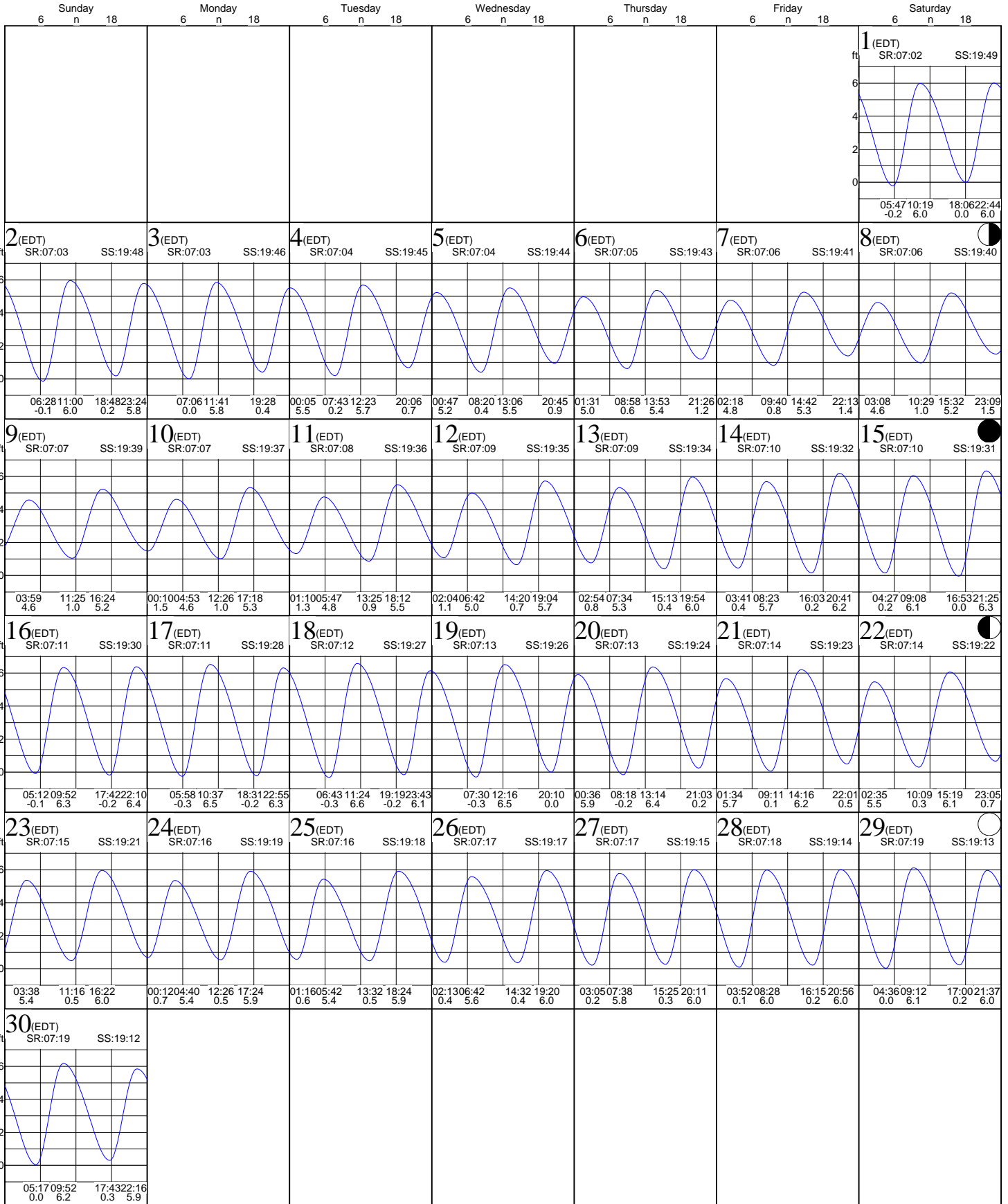
# Tides:Champney Island, South Altamaha River

based on Savannah River Ent., Georgia (NOAA)  
31° 20' N 81° 28' W

Average Tides  
Mean Range: 5.2 ft  
MHWS 6.1 ft  
Mean Tide: 2.8 ft

Monthly High & Low  
High September 18, 11:24 6.6 ft  
Low September 18, 06:43 -0.3 ft

## September 2012







# Tides:Champney Island, South Altamaha River

based on Savannah River Ent., Georgia (NOAA)  
31° 20' N 81° 28' W

Average Tides  
Mean Range: 5.2 ft  
MHWS 6.1 ft  
Mean Tide: 2.8 ft

Monthly High & Low  
High December 13, 08:45 6.8 ft  
Low December 14, 04:47 -1.0 ft

## December 2012

