

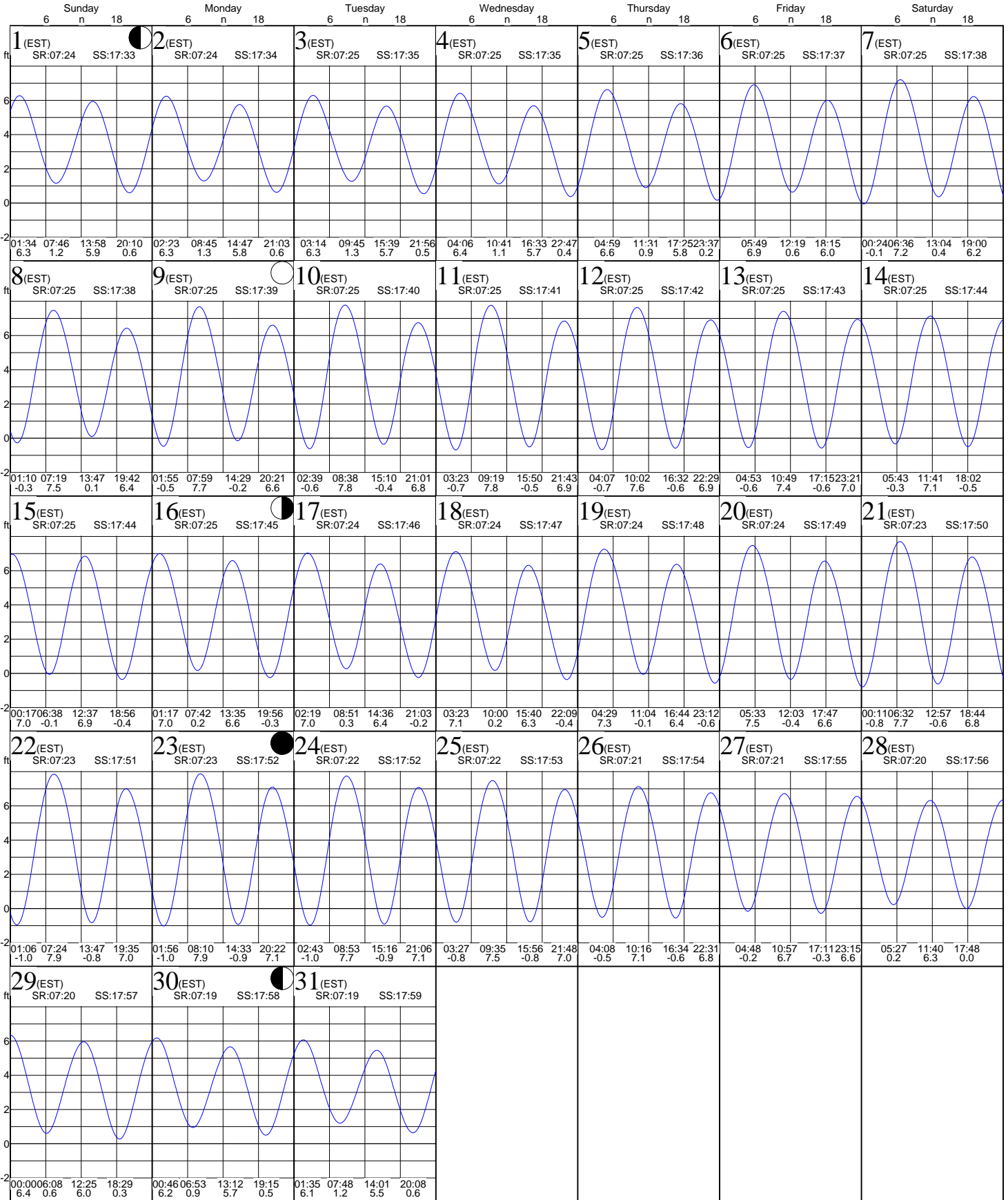
Tides:Old Tower, Sapelo Island

based on Savannah River Ent., Georgia (NOAA)
31° 23' N 81° 17' W

Average Tides
Mean Range: 6.9 ft
MHWS 8.0 ft
Mean Tide: 3.6 ft

Monthly High & Low
High January 23, 08:10 7.9 ft
Low January 23, 01:56 -1.0 ft

January 2012



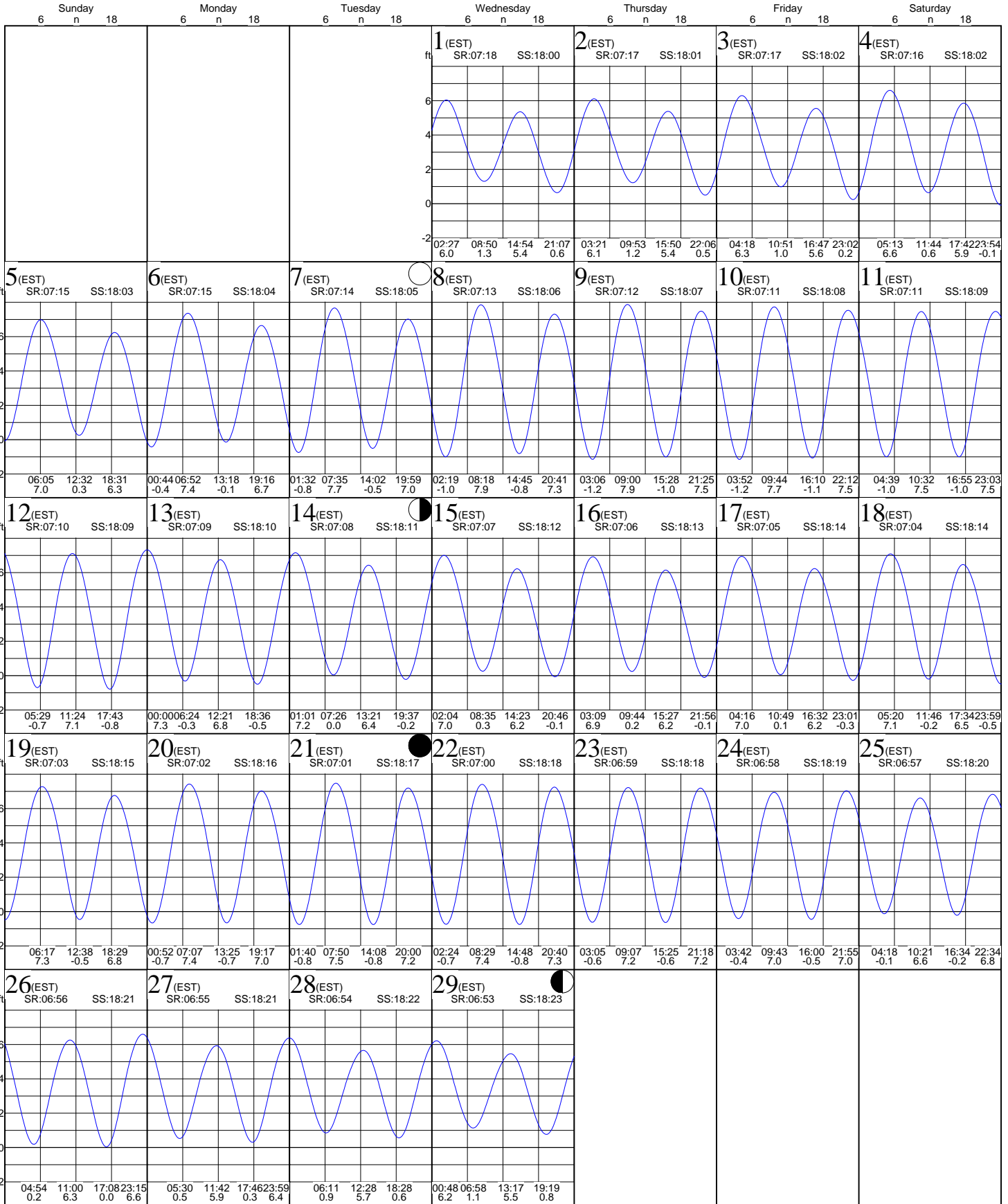
Tides:Old Tower, Sapelo Island

based on Savannah River Ent., Georgia (NOAA)
31° 23' N 81° 17' W

Average Tides
Mean Range: 6.9 ft
MHWS 8.0 ft
Mean Tide: 3.6 ft

Monthly High & Low
High February 9, 09:00 7.9 ft
Low February 10, 03:52 -1.2 ft

February 2012



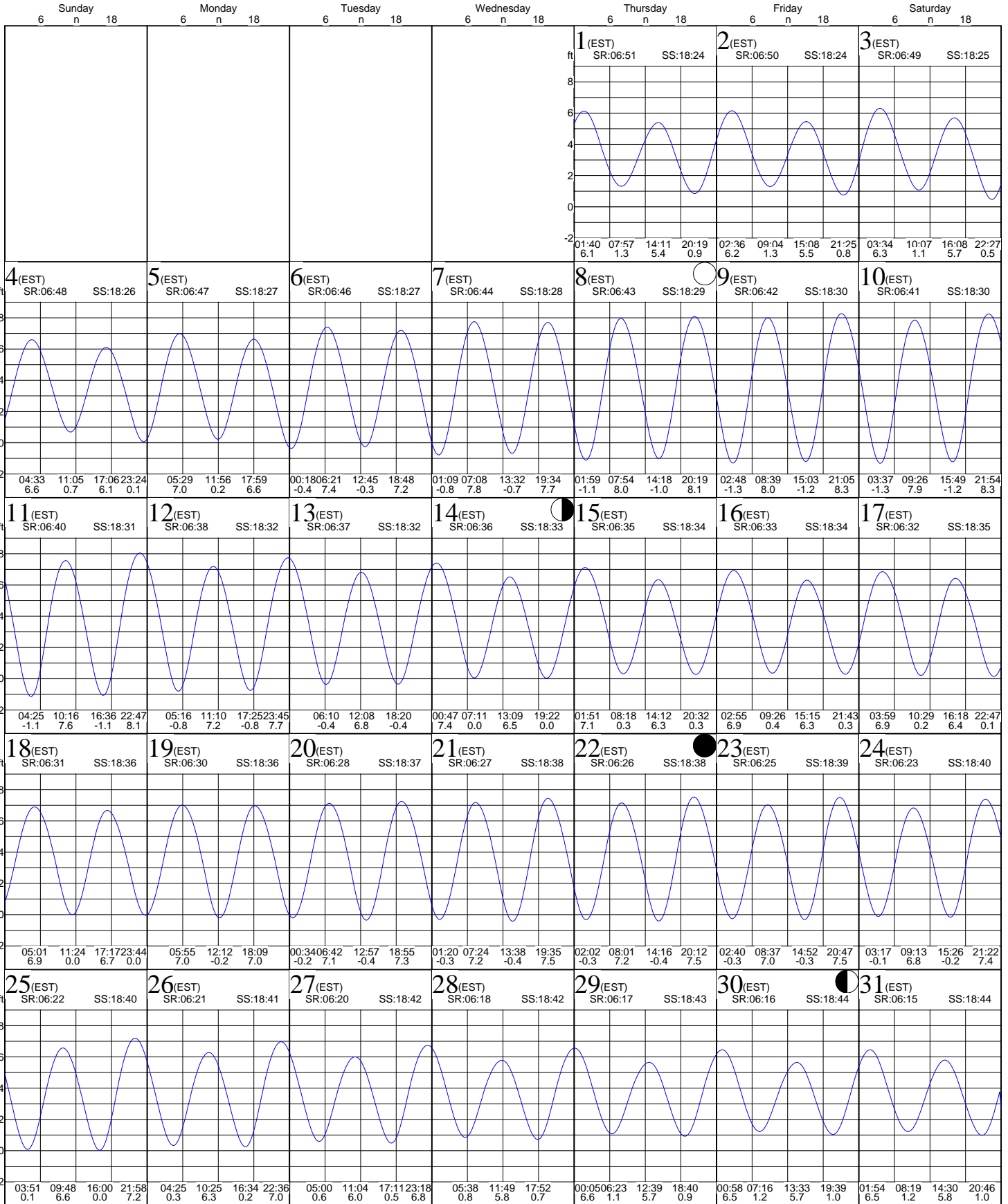
Tides:Old Tower, Sapelo Island

based on Savannah River Ent., Georgia (NOAA)
31° 23' N 81° 17' W

Average Tides
Mean Range: 6.9 ft
MHWS 8.0 ft
Mean Tide: 3.6 ft

Monthly High & Low
High March 9, 21:05 8.3 ft
Low March 10, 03:37 -1.3 ft

March 2012



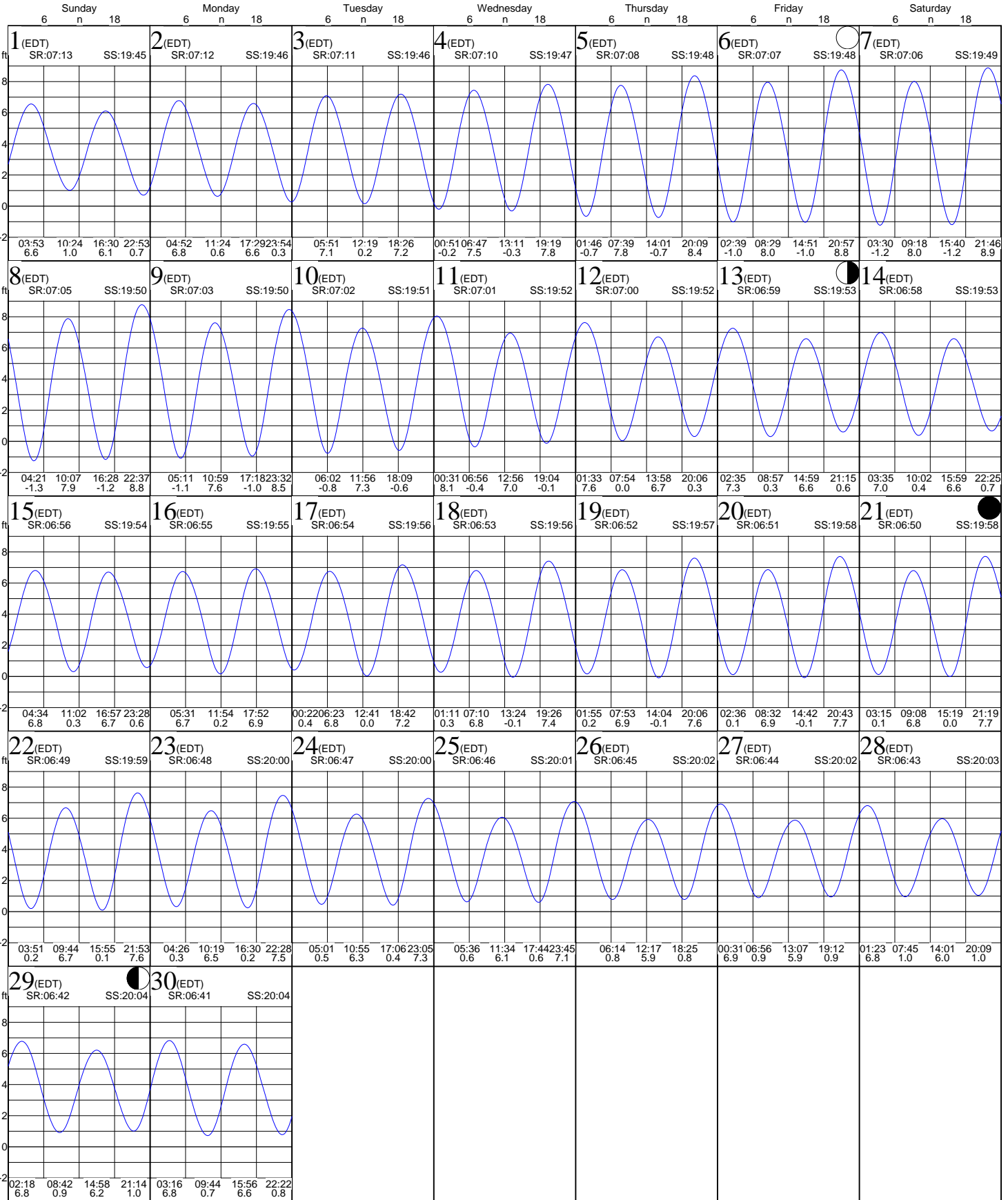
Tides:Old Tower, Sapelo Island

based on Savannah River Ent., Georgia (NOAA)
31° 23' N 81° 17' W

Average Tides
Mean Range: 6.9 ft
MHWS 8.0 ft
Mean Tide: 3.6 ft

Monthly High & Low
High April 7, 21:46 8.9 ft
Low April 8, 04:21 -1.3 ft

April 2012



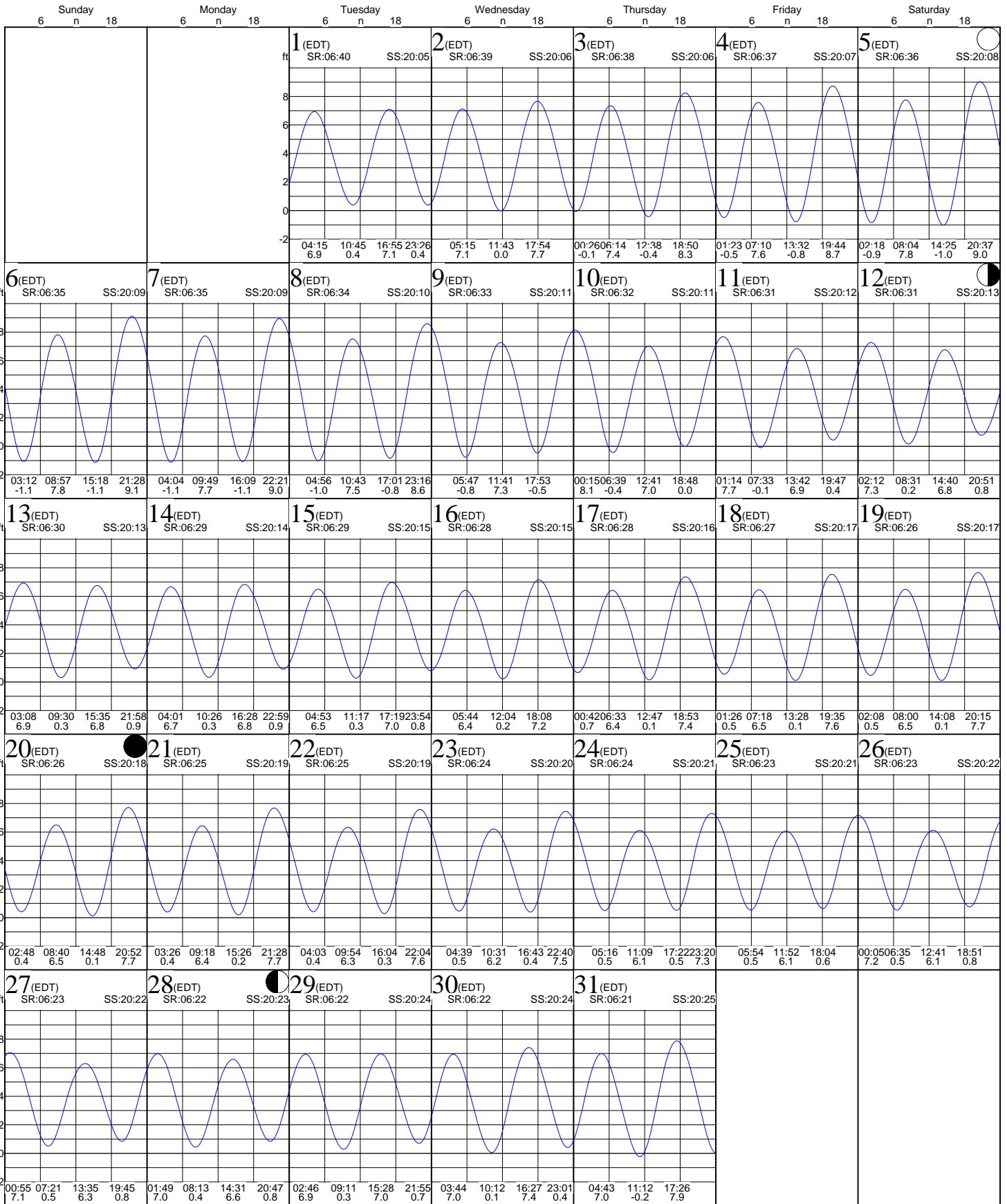
Tides:Old Tower, Sapelo Island

based on Savannah River Ent., Georgia (NOAA)
31° 23' N 81° 17' W

Average Tides
Mean Range: 6.9 ft
MHWS 8.0 ft
Mean Tide: 3.6 ft

Monthly High & Low
High May 6, 21:28 9.1 ft
Low May 6, 15:18 -1.1 ft

May 2012



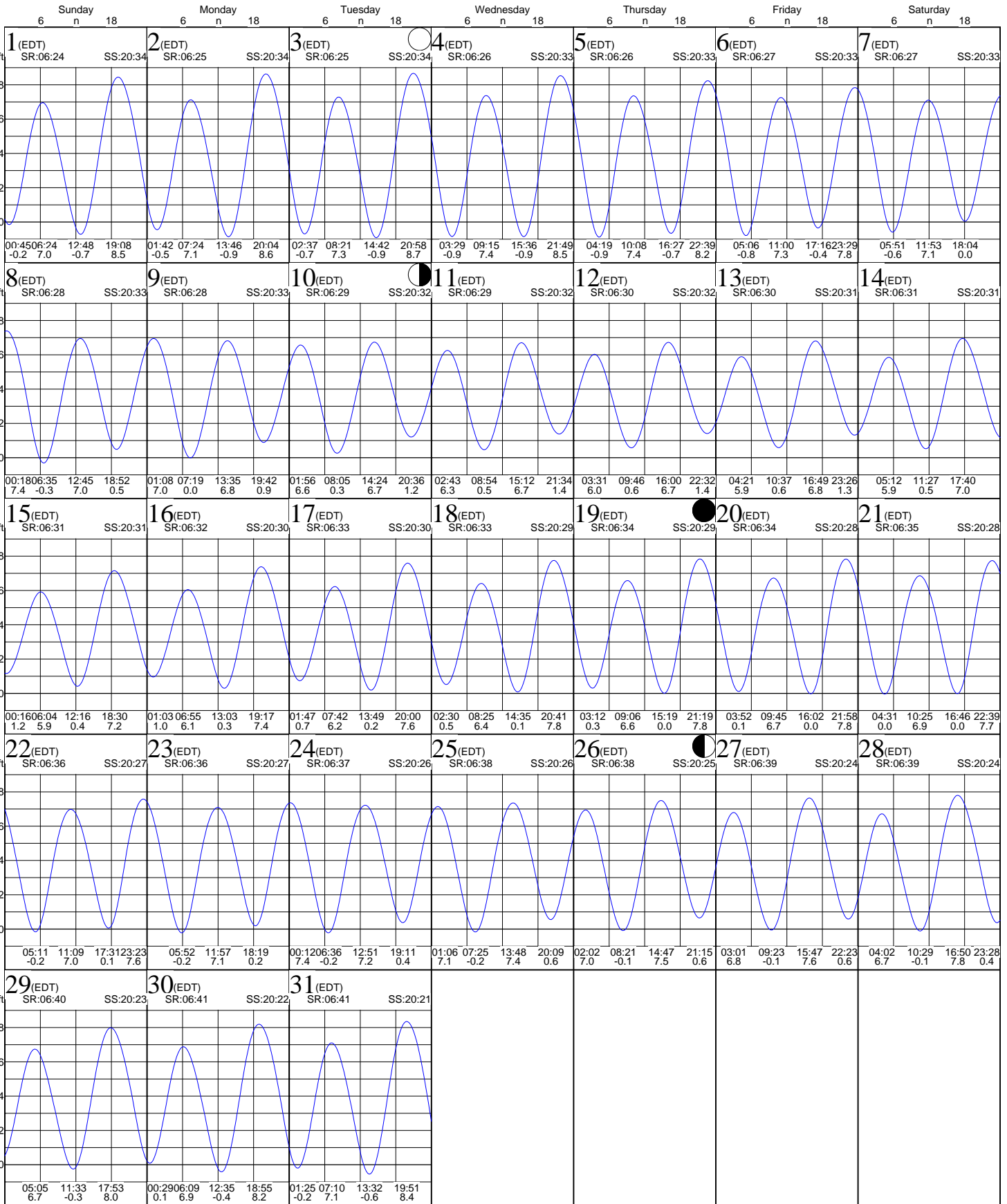
Tides:Old Tower, Sapelo Island

based on Savannah River Ent., Georgia (NOAA)
31° 23' N 81° 17' W

Average Tides
Mean Range: 6.9 ft
MHWS 8.0 ft
Mean Tide: 3.6 ft

Monthly High & Low
High July 3, 20:58 8.7 ft
Low July 3, 14:42 -0.9 ft

July 2012



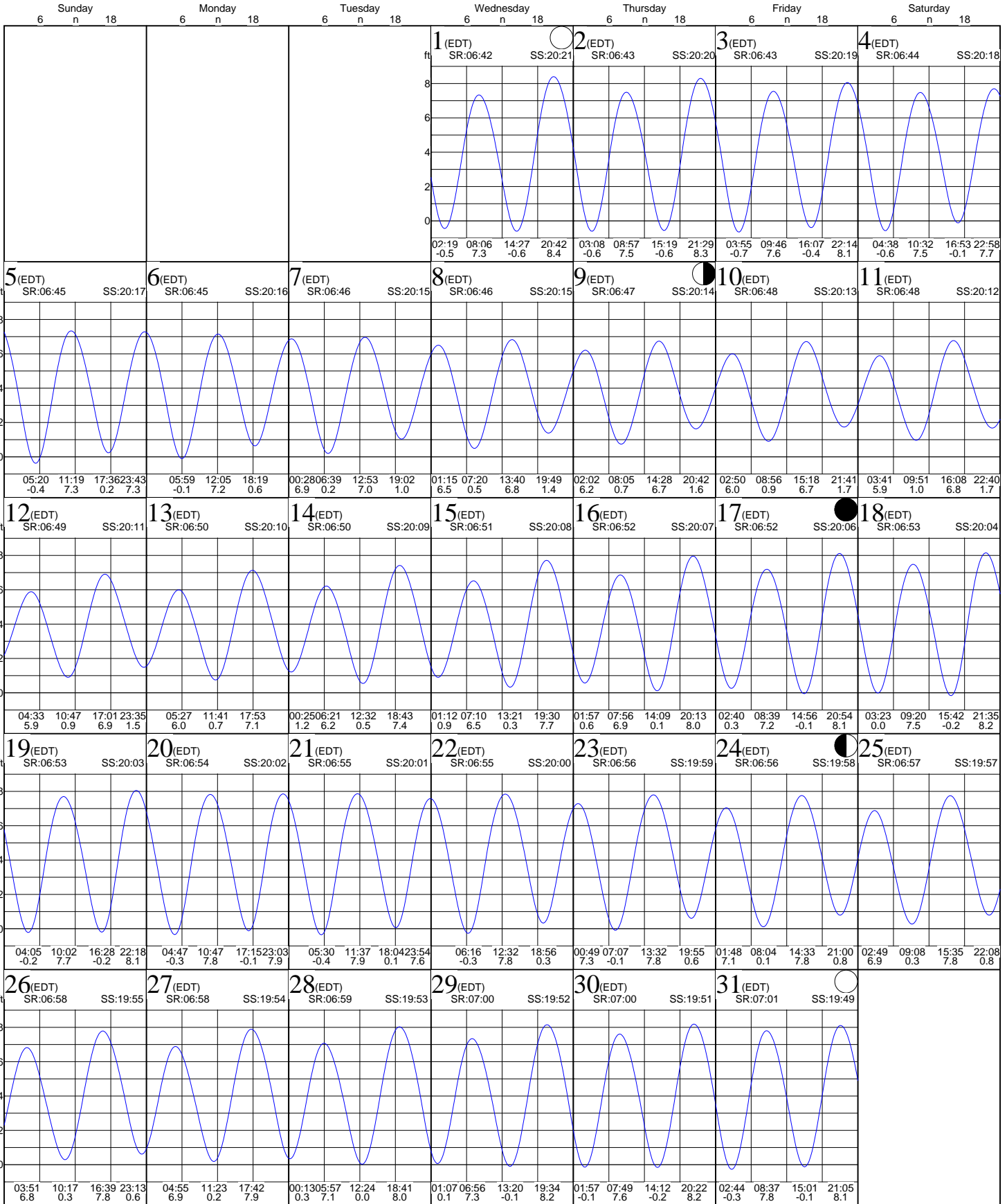
Tides:Old Tower, Sapelo Island

based on Savannah River Ent., Georgia (NOAA)
31° 23' N 81° 17' W

Average Tides
Mean Range: 6.9 ft
MHWS 8.0 ft
Mean Tide: 3.6 ft

Monthly High & Low
High August 1, 20:42 8.4 ft
Low August 3, 03:55 -0.7 ft

August 2012



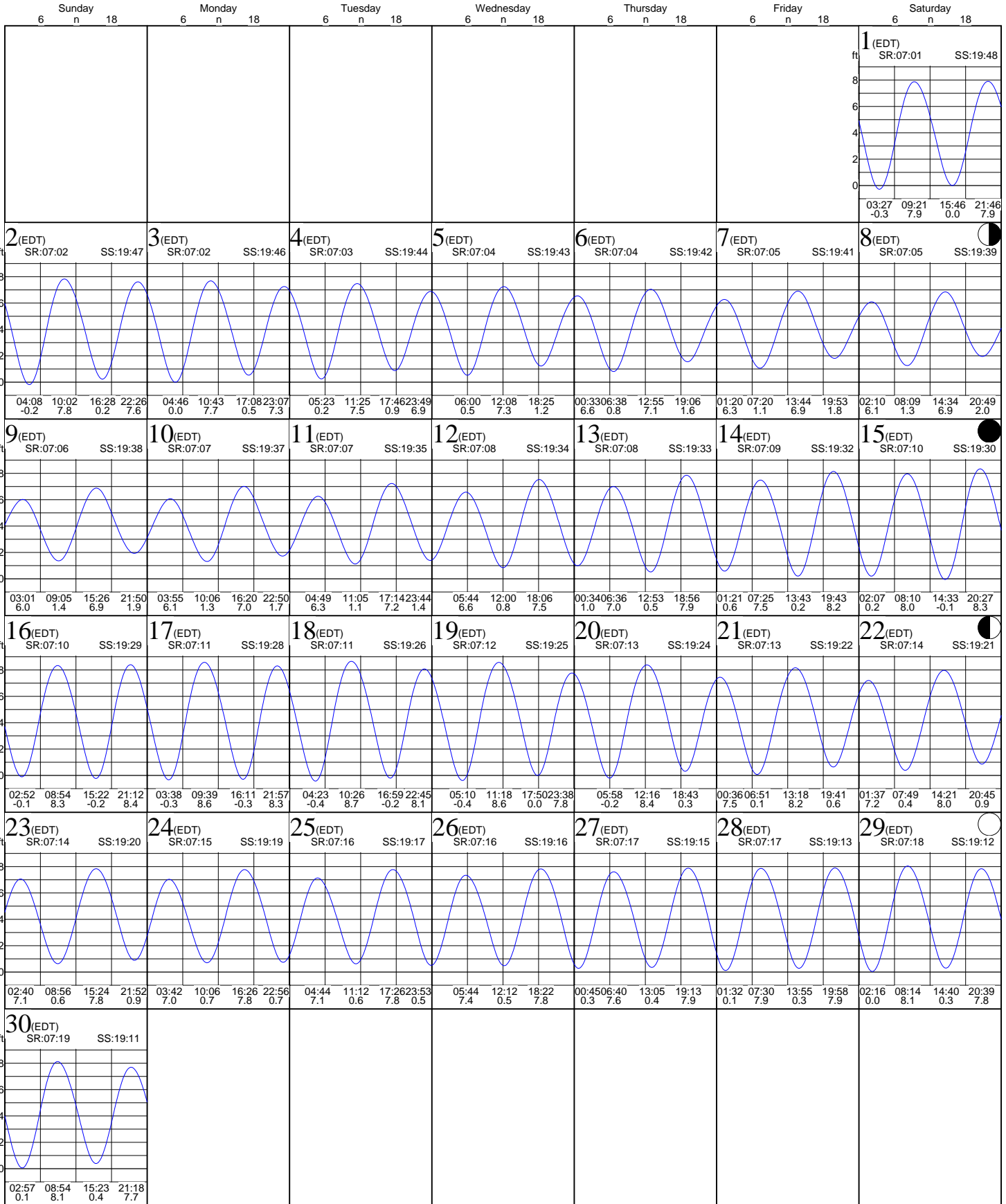
Tides:Old Tower, Sapelo Island

based on Savannah River Ent., Georgia (NOAA)
31° 23' N 81° 17' W

Average Tides
Mean Range: 6.9 ft
MHWS 8.0 ft
Mean Tide: 3.6 ft

Monthly High & Low
High September 18, 10:26 8.7 ft
Low September 18, 04:23 -0.4 ft

September 2012



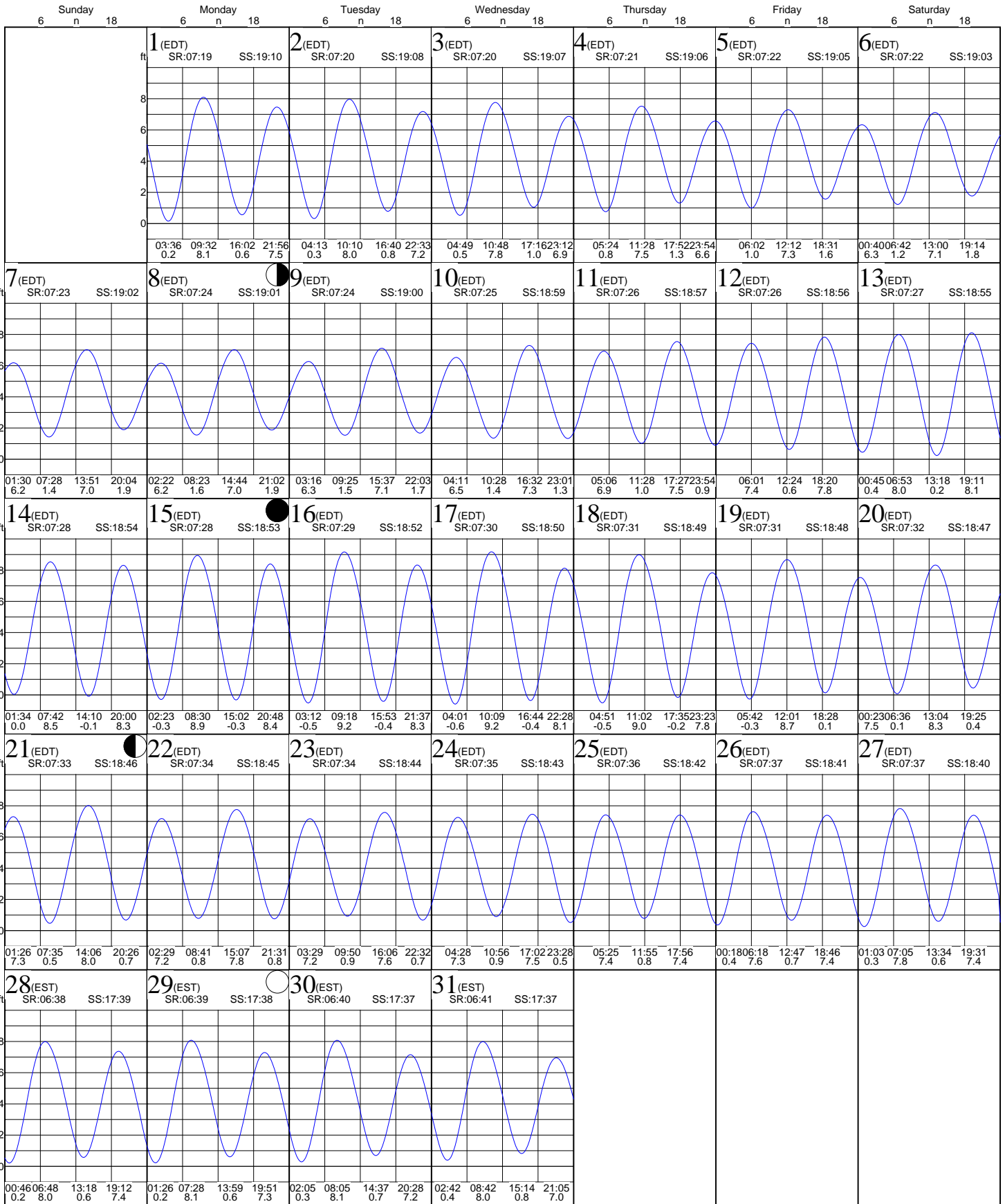
Tides:Old Tower, Sapelo Island

based on Savannah River Ent., Georgia (NOAA)
31° 23' N 81° 17' W

Average Tides
Mean Range: 6.9 ft
MHWS 8.0 ft
Mean Tide: 3.6 ft

Monthly High & Low
High October 17, 10:09 9.2 ft
Low October 17, 04:01 -0.6 ft

October 2012



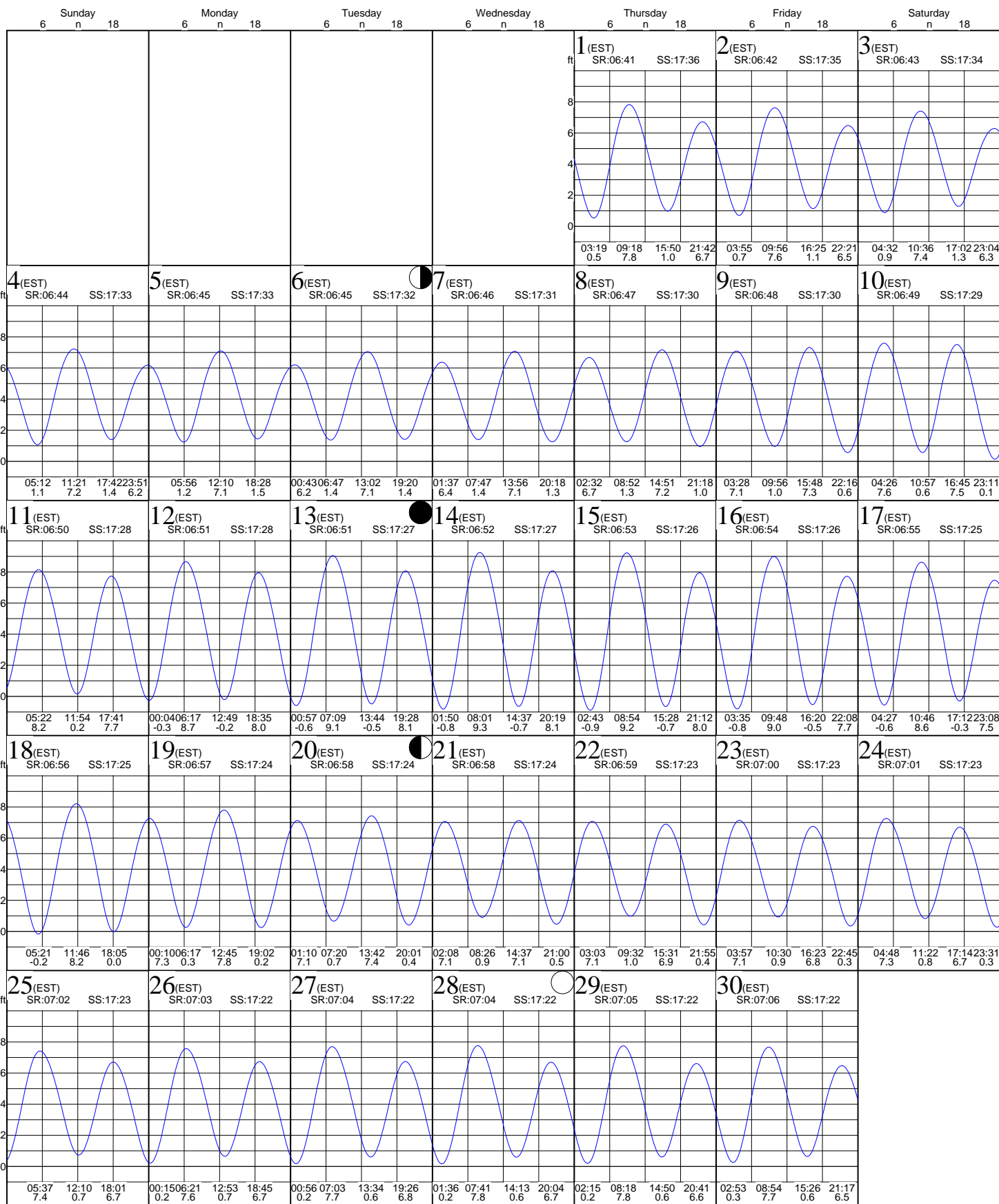
Tides:Old Tower, Sapelo Island

based on Savannah River Ent., Georgia (NOAA)
31° 23' N 81° 17' W

Average Tides
Mean Range: 6.9 ft
MHWS 8.0 ft
Mean Tide: 3.6 ft

Monthly High & Low
High November 14, 08:01 9.3 ft
Low November 15, 02:43 -0.9 ft

November 2012



Tides:Old Tower, Sapelo Island

based on Savannah River Ent., Georgia (NOAA)
31° 23' N 81° 17' W

Average Tides
Mean Range: 6.9 ft
MHWS 8.0 ft
Mean Tide: 3.6 ft

Monthly High & Low
High December 13, 07:47 8.9 ft
Low December 14, 02:27 -1.3 ft

December 2012

